

# THURMAN

## KITCHEN · BATH · ELECTRICAL · PLUMBING

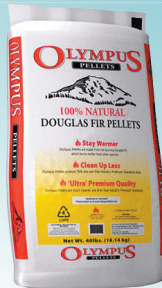
### OLYMPUS PELLET FUEL

- Ultra Premium Douglas Fir
- Hot burning, dry and clean
- 40-lb. bag
- 50 bags per ton

**OLYMPUS**  
PELLETS

**\$4.99 / EACH**  
**\$239 / TON**

36090300



### LED SHOP & GARAGE LIGHT

- 2-lamp 36 watt 3200 lumen
- Includes pull-chain switch, 5' power cord
- Rated life of 50,000 hours
- Power outlet on the end allows multiple lights to be daisy chained

**\$29.99** 40730000



**CTL**

**STARTS NOW!**  
Prices may vary after . . .  
December 31, 2018

### FIRE LOGS

- Clean burning
- Safer to use
- Significantly less creosote buildup
- More efficient
- No dirt, mold or bugs

**\$1.09 / EACH**  
**\$399 / TON**

36090600



### EDWYN PULL-DOWN KITCHEN FAUCET

- Gracious and uncomplicated style
- Power Clean™ spray technology provides 50 percent more spray power
- Spot Resist™ stainless steel finish

**\$149** 20087600

**MOEN**



### MEDINA PULL-OUT KITCHEN FAUCET

- Tailored yet relaxed, the Medina is an exercise in design balance
- Pull-out spout Power Clean™ spray provides 50 percent more power
- Chrome

**\$109** 20087200

**MOEN**



### ADLER KITCHEN FAUCET

- Low arc spout design for conventional styling
- One handle lever design for ease of use
- ADA compliant
- Chrome

**\$49** 20084900

**MOEN**



### SIROCCO 20 WOOD STOVE

- 1.8 cu. ft. firebox and up to 38,000 Btu's
- This beautiful stove also has the incredible thermostat that has proven to be a favorite with hundreds of thousands of homeowners
- Enjoy low burn times up to 20 hours, 86.4% efficiency and emissions as low as 1.3 gr/hr
- Black door, optional convection deck shown

Blaze King

**\$2299** \*33343000



### RADIATOR PORTABLE HEATER

- Quiet oil filled radiator
- Automatic dial thermostat
- Permanently sealed and never needs refueling
- 3 heat settings include 600, 900, 1500 watts
- Safety overheat protection

**PROFUSION**  
H · E · A · T

**\$39** 10728400



### INDEPENDENCE WOOD STOVE

- Up to 70,000 BTU heat output
- Non-catalytic, heats up to 2000+ sq ft
- The easy operation of a single lever burn control regulates primary and secondary air
- Secondary air tube protected with a stainless steel cover plate ensures complete combustion
- Large viewing area through an elegantly arched cast iron door
- Airwash in combination with high temperatures keeps the viewing glass clean
- Cool room air is circulated around the firebox, heated and returned to the room

**NAPOLEON**

**\$1699** 33364200



### REPLACEMENT FIRE BRICK

- Standard firebrick for wood stoves and inserts
- 9"x4.5"x1.25"

**\$3.99** 33430500

**MUTUAL MATERIALS**  
Trusted Since 1909



### PERSONAL PORTABLE HEATER

- 3 heat settings
- Adjustable thermostat
- Overheat protection
- Durable steel cabinet

**PROFUSION**  
H · E · A · T

**\$24.88** 10727100



### TOILET FILL VALVE

- Replaces old fashioned float and rod system
- Stops noise, leaks and wasted water
- Easy to install

**Fluidmaster Inc.**  
The Most Popular Name in Toilet Care

**\$7.88** 21452600



### OUTDOOR FAUCET INSULATOR

- Insulates outdoor faucets in cold weather
- Provides maximum freeze protection

**M-D Building Products**

**\$2.99** 39064200





## TOILETS

### CIMARRON TOILET PACKAGE

- Featuring the classic, versatile look of the Cimarron collection, this two-piece toilet combines high-powered flush performance with graceful curves
- Class 5 flushing technology delivers extraordinary bulk flushing power
- Designed to have a sitting height equal to that of a standard chair
- Standard round front design
- Seat, wax ring & bolts included
- White



**KOHLER**

**\$249** \*20903600

### HIGHLINE TOILET PACKAGE

- Two piece design
- Comfort height elongated toilet bowl
- High efficiency 1.28 gallons per flush
- Seat, wax ring & bolts included
- White



**KOHLER**

**\$259** \*20902900

### COLONY RIGHT HEIGHT TOILET PACKAGE

- Complete toilet package includes seat, wax ring and bolts
- Easy Flush™ flushing technology
- 16-1/2" high elongated bowl
- 1.28 gallon per flush



*American Standard*  
Style That Works Better

**\$199** 20983300

### COLONY TOILET PACKAGE

- Complete toilet package includes seat, wax ring and bolts
- High Efficiency Toilet
- Generous 9" x 8" water surface area
- 1.28 gallon per flush
- White



*American Standard*  
Style That Works Better

**\$149** 20982800

## BATHROOM FAUCETS

### ANTIOCH WIDE-SPREAD FAUCET

- Simple yet sophisticated
- classic design that matches any motif, eye-catching style and durable construction
- 3-hole mount
- Ceramic disc valve provides a tight seal for drip free performance and ensures durability over time
- Touch-down drain assembly
- Brushed Nickel finish



**danze**

**\$239**

20180604

### ADLER

- Smooth curves and minimalist aesthetics
- 4" center set design allows for easy installation
- Chrome



**\$49**

20184500

**MOEN**

### CARMEL

- Elegant modern design in a traditional configuration
- 90° turn ceramic disc cartridges
- Satin Nickel



**\$89**

20109000

**HUNTINGTON BRASS**

### RELIAFLO

- Two handle bathroom sink faucet
- Includes pop-up drain
- Chrome



**\$29**

20103000

**HUNTINGTON BRASS**

### ADLER SHOWER

- PosiTemp® pressure-balancing valve maintains water pressure and controls temperature
- Chrome



**\$89**

20184705

**MOEN**

### CONWAY

- 1-hole or 3-hole installation, optional deck plate included
- Aerated flow is ideal for everyday bathroom tasks
- Chrome



**\$79**

20189600

**MOEN**

### SIENNA

- 90° turn ceramic disc cartridges
- Standard 3 hole - 4" installation
- Antique Bronze finish



**\$89**

20109300

**HUNTINGTON BRASS**

### BANBURY HAND-SHOWER

- Five-function hand shower
- 59" kink-free metal hose
- Chrome



**\$35**

20194005

**MOEN**

### TIFFIN

- Ageless yet fashion-forward style works seamlessly with today's lifestyles
- 4" centerset design allows for easy installation
- Mediterranean Bronze



**\$99**

20189000

**MOEN**

## BATHROOM ACCESSORIES

### GRAB BAR WITH SHELF

- Supports up to 250 lbs.
- 16" bar length, 1" diameter
- Stainless Steel



**\$39.99**

21279204

**MOEN**  
HOME CARE

### ADA GRAB BAR

- 1-1/2" diameter
- Stainless steel
- Concealed mount



**\$24.88**

21279616

**MOEN**  
HOME CARE

### GRAB BAR WITH PAPER HOLDER

- 8" bar length, 1" diameter
- Stainless Steel



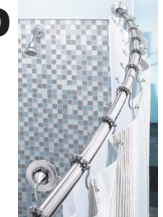
**\$49.99**

21279200

**MOEN**  
HOME CARE

### CURVED SHOWER ROD

- Fits standard 72" x 72" shower curtains
- Adjusts from 5' to 6' for a more flexible installation
- Chrome



**\$25.99**

21201200

**MOEN**  
HOME CARE

### DESIGNER GRAB BAR

- 16" bar length, 1-1/4" diameter
- Finger notches on the bar provide a more secure place for you to grab
- Brushed Nickel



**\$39.99**

21279416

**MOEN**  
HOME CARE

### SUCTION GRAB BAR

- Mounts to any smooth surface
- Easy to use
- White



**\$13.99**

21280200

**MOEN**  
HOME CARE

**LIGHTING**

**LED SECURITY LIGHT**

- 35 watt, 3500 lumens
- 60" X 60" coverage when mounted at 20' high
- Integrated dusk to dawn photocell
- Cast aluminum housing
- Poly carbonate lens
- Suitable for wet location



**\$59.99**

41614000

**CTL**

**BATTERY OPERATED LED MOTION FLOOD LIGHT**

- Battery operated - no wiring
- 2 separate lights pan and tilt for desired coverage
- Lights work only after dark to preserve batteries
- Easy Install
- Choose Bronze or White



**\$29.99**

41662000  
41662001

**LED WALL PACK**

- 12 watt, 1000 lumens
- Diecast aluminum housing
- Dusk to dawn photocell
- Instant start
- Suitable for wet locations
- 50,000 hour life



**CTL**

**\$34.99**

41613200

**SATURN LED CEILING LIGHT**

- 12" 15 watt 800 lumens
- 25,000 hour rated life
- Satin nickel & white



**CTL**

**\$39.99**

40740000

**LED CEILING LIGHT**

- 11" round flush mount
- 16 watt, 960 lumens
- 3000k, at 90cri
- White housing and white shade



**NIMO**  
LIGHTING

**\$19.99**

40724000

**HEATING**

**PORTABLE HEATER**

- Adjustable thermostat
- Overheat protection
- Tip-over switch
- 2 heat settings, 750 watt & 1500 watt
- Fan only setting
- White

**PROFUSION**  
M.E.F.A.T



**\$19.99**

10725500

**MILKHOUSE UTILITY HEATER**

- Adjustable thermostat
- 2 heat settings, 750 & 1500 watt
- Metal construction
- Gunmetal finish

**PROFUSION**  
M.E.F.A.T



**\$26.99**

10725200

**SHOP LIGHT & HEATER**

- 3 settings: light only, light and 1 element or light and 2 elements
- Halogen light can be used on its own or with the heater
- 90° vertical tilting arm
- Mount on ceiling for widespread heat coverage
- Durable metal housing makes heater ideal for workshops and garages
- Quartz element
- Black

**PROFUSION**  
M.E.F.A.T

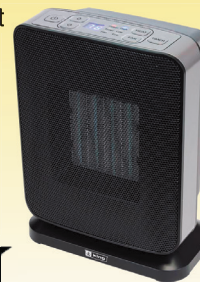


**\$49.99**

10721000

**ELECTRONIC PORTABLE HEATER**

- Energy saving electronic thermostat
- Ideal for use in a bathroom
- ALCI Plug for Wet Area Protection
- 2 heat settings, 750 & 1500 watt
- 6' cord with grounded plug
- Large LED display
- Ceramic heating elements



**\$59**

10751000

**king**

**LINE VOLT THERMOSTAT**

- Single pole
- 2-wire installation
- 120/240 volt
- 22 Amp

**king**

**\$24.99**

10626500



**HEATING**

**PIC-A-WATT WALL HEATER**

- Multi wattage, 250-1500 watt 120 volt or, 500-2250 watt 240 volt
- 65 CFM C-frame motor with squirrel cage blower
- 20-gauge powder coated grill in white
- Whisper quiet

**king**



**\$179**

10610000  
10610300

**DUAL WATTAGE WALL HEATER**

- Dual wattage fan forced heater
- 750/1500 watt 120 or 240 volt
- 1000/2000 watt 240 volt
- 9" high X 12" wide cutout

**king**



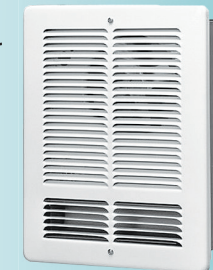
**\$149**

10613000  
10613200  
10613400

**WALL HEATER**

- Dual wattage fan forced heater
- 750/1500 watt 120 or 240 volt
- 1000/2000 watt 240 volt
- 12" high X 9" wide cutout

**king**



**\$109**

10611600  
10611800  
10612000

**MULTI-WATTAGE WALL HEATER**

- Choose from 2000, 3000 or 4000 watts, to tailor to a room's specific heating requirements
- NiChrome open coil element for quick heat transfer
- Patented Smart Limit Protection®
- Long life unit bearing motor
- 240 volt



**\$249**

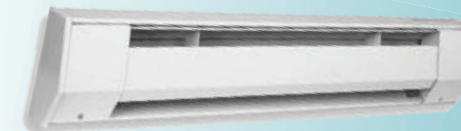
10614900

**king**

**BASEBOARD HEATERS**

- Quiet running convection heat
- All aluminum element
- Full length safety cut-out
- May be wired from either end
- White

**king**



<b>27" 500 WATT</b> 10681000-81100 <b>\$49</b>	<b>3' 750 WATT</b> 10681200-81300 <b>\$59</b>	<b>4' 1000 WATT</b> 10681400-81500 <b>\$69</b>
<b>5' 1250 WATT</b> 10681505 <b>\$79</b>	<b>6' 1500 WATT</b> 10681600-81700 <b>\$89</b>	<b>8' 2000 WATT</b> 10681800 <b>\$119</b>



# PELLET STOVES & INSERTS    GAS STOVES & FIREPLACES    WOOD STOVES & INSERTS

## BIG E PELLET FURNACE

- Heats up to 2200 sq. ft.
- Automatic fuel feed lets you burn up to 140 hours
- Quiet 120 CFM blower
- Heavy steel construction
- One touch digital control board
- "Hot Rod" automatic fire starter igniter
- Stainless steel burn pot
- Large and easily accessible ash drawer
- Special air wash glass



**\$1,999**

**BRECKWELL**  
Exceptional Heat. Outstanding Value.  
33374800

## ARLINGTON GAS STOVE

- The slender, compact cast iron gas stove that out performs!
- No electricity is required to light or operate - ensures reliable use even during power failures
- PHAZERAMIC™ burner technology featuring a randomly flickering flame and realistic glowing ember bed
- 50% flame/heat adjustment for maximum comfort and efficiency



**\$1,899**

**NAPOLEON**  
\*33361500

## PRINCESS ULTRA CATALYTIC WOOD STOVE

- 2.8 cu. ft. firebox and up to 40,000 Btu's
- This beautiful stove also has the incredible thermostat that has proven to be a favorite with hundreds of thousands of homeowners
- Enjoy low burn times up to 20 hours, 82.5% efficiency and emissions as low as 2.42 gr/hr
- Black door (optional gold door shown)



**\$2,699**

**Blaze King**  
\*33341000

## MAVERICK PELLET INSERT

- Heats up to 1500 sq. ft.
- Automatic feed allows you to burn up to 45 hours
- Heavy steel construction
- One touch digital control board
- "Hot Rod" automatic fire starter igniter
- Stainless steel burn pot
- Air wash system helps keep glass clean



**\$2,399**

33375404

**BRECKWELL**  
Exceptional Heat. Outstanding Value.

## CLARITY GAS STOVE

- Modern clean design
- 20"x17.5" glass viewing area
- Black Reflections firebox floor
- 27,000 Btu
- 50% turndown
- Heats 600-1500 square feet
- Top or rear vent



**\$1,799**

**Blaze King**  
\*33339000

## PRINCESS INSERT

- Catalytic system has an overall 82.5% efficiency
- Large firebox holds up to 60-lbs. of wood
- Includes shroud and black door
- Black door (optional gold door shown)



**\$2,899**

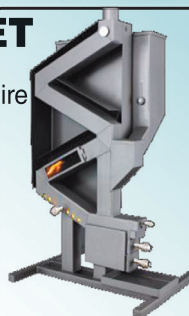
\*33340900

**Blaze King**

## NON-ELECTRIC PELLET STOVE

- Continuous gravity feed does not require auger or blower. Operates even if the power goes out
- Heats 800 to 2000 sq. ft.
- 40-lb. bag of pellets lasts up to 31 hours

**Wise Way**  
pellets



**\$1,999**

33372100

## MADISON GAS FIREPLACE

- 36" Deluxe Clean-Face
- 30-1/2"x20" viewing area
- 20,000 Btu
- 5-Piece log set
- Safety barrier screen
- Direct Vent



**\$999**

**AMERICAN HEARTH**  
33310700



## RV100 CLASSIC PELLET STOVE

- Majolica tiling
- Cast iron grate & burn pot
- Combustion chamber in FIREX 600
- Glass-ceramic door with border, heat resistant up to 750°C
- Function controls with graphic display and remote control
- Timer thermostat as standard
- Tangential fan heating
- Choose White, Bordeaux, Black, Parchment



**\$3,399**

33300200

**Ravelli**  
il fuoco intelligente

## FRANKLIN FIREPLACE INSERT

- Converts your wood burning fireplace into an efficient gas fired heat source
- 26,000 Btu
- unique Slope Glaze Burner produces natural flickering flames
- Millivolt ignition provides heat even when the power is out
- Hand-painted ceramic fiber logs
- Includes blower, surround, safety barrier screen



**\$1,899**

\*33312100

**AMERICAN HEARTH**

## S4 PEDESTAL WOOD STOVE

- Up to 70,000 BTU's
- Hidden hinges and extra large glass viewing area
- "Secure lock" lever action door handle with removable handle sleeve
- Heavy duty 5/16" firebox top
- Vortex™ combustion system



**\$1999**

33364505

**NAPOLEON**

## MODEL 3142 WOOD STOVE

- Heats up to 1000 square feet
- Durable and efficient cast iron
- Ashpan
- Airwash system
- Tertiary Air



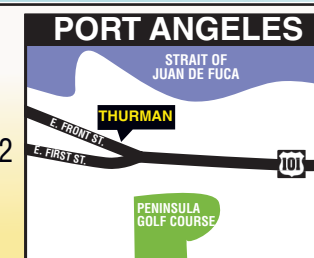
**\$1,699**

33381000

**morso**  
wood burning stoves

**THURMAN**  
KITCHEN · BATH · ELECTRICAL · PLUMBING  
WWW.THURMANSUPPLY.COM

1807 East Front St.  
Port Angeles, Washington 98362  
360.457.8591



**Our Policy:** Each of these items is required to be readily available for sale at or below the advertised price in all Thurman stores listed, except as specified in this ad. Some items in this ad may not reflect reduction from every day prices, but still represents an outstanding value to the customer. We reserve the right to correct typographical errors.